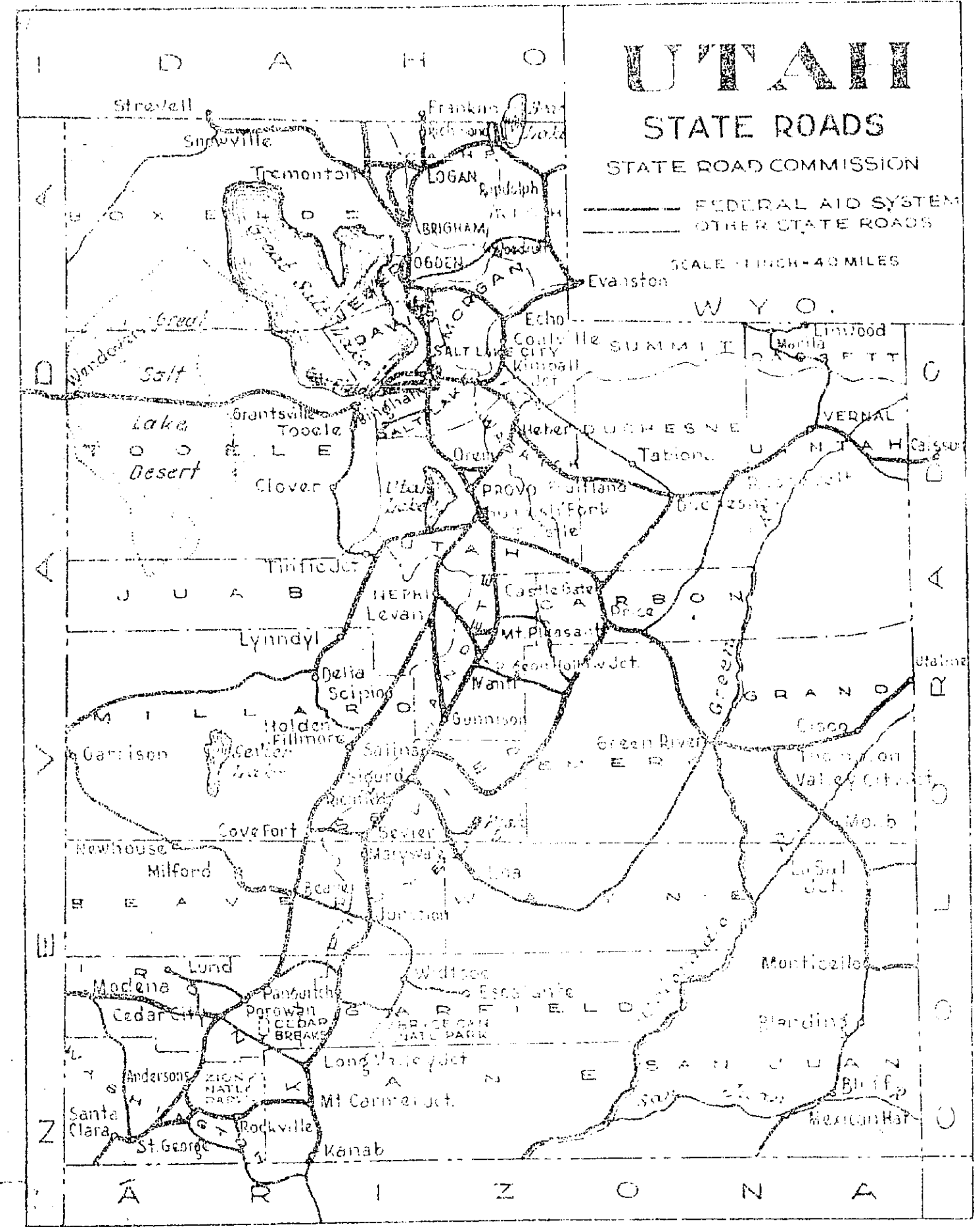


STATE OF UTAH STATE ROAD COMMISSION



INDEX TO SHEETS SN-U-F.A.P. No 32 (3)

SHEET	DESCRIPTION	DRAWING No.	STATION
1	TITLE SHEET		
2	TYPICAL SECTION		
3	PLAN AND PROFILE		
4-5	STD. HIGHWAY SIGNS	8-95-142	
6-A	STD. R/W FENCE	M-46	
7-2	X-SECTIONS		

INDEX TO SHEETS S-279 (1)

SHEET	DESCRIPTION	DRAWING	STATION
1	TITLE SHEET		
2	TYPICAL SECTION		
3	PLAN AND PROFILE		
4-14	147.71' O.D. STEEL & CONC. BR.	C-257 (1)	15+31
15	HANDMAIL DETAILS	SR-3	15+31
16	REVISED CHANGE IN WEBER RIVER	B-115	
17-18	STD. HIGHWAY SIGNS	B-95-142	
19A	SUPER. AND WIDEN CURVES	M-160	
19B	STD. R/W FENCE	M-46	
19C	F.A.P. & R/W MKRS.	M-45	
1-14	CROSS SECTIONS		

PLANS OF PROPOSED STATE ROAD FEDERAL AID PROJECT

- SN - F.A.G.H. No 214-C (3) ~ CROSSING SIGN.
- SN - F.A.G.H. No 214-C (2) ~ 0.527 MILES
- SN - F.A.P. No 214-C (1) ~ 2.054 MILES
- SN - F.A.P. No 214-D (1) ~ 0.160 MILES
- SN - F.A.G.H. No 214-E (1) ~ 3.543 MILES
- SN - F.A.G.H. No 214-F (1) ~ 0.455 MILES
- SN-U-F.A.P. No 32 (3) ~ 0.189 MILES
- WEBER COUNTY S - 279 (1) ~ 0.455 MILES

INDEX TO SHEETS SN-U-F.A.P. No 214-E (1)

SHEET	DESCRIPTION	DRAWING	STATION
1	TITLE SHEET		
2	TYPICAL SECTION		
3-9	PLAN AND PROFILE		
10-11	STD. HIGHWAY SIGNS	B-95-142	
12	STD. R/W FENCE	M-46	
13	X-SECTIONS		
14	CONC. DIV. BOXES LT. & RT.	V-353	32+26
15	7' x 6' CONC. DIV. BOX ON FE. WEST	V-354	32+40
16	6' x 3' x 7' CONC. BOX	V-355	32+54
17	6' x 3' x 7' CONC. BOX	V-356	32+68
18	6' x 3' x 7' CONC. BOX	V-357	32+82
19-A	R.R. ADVANCE WARNING SIGN	B-40	
19-B	R.R. MARKERS	B-40	
19-C	SUPER. AND WIDEN CURVES	M-160	
19-D	R/W FENCE AND GATES	M-46	
1-15	X-SECTIONS		

INDEX TO SHEETS F.A.G.H. No 214-C (2)

SHEET	DESCRIPTION	DRAWING	STATION
1	TITLE SHEET		
2	TYPICAL SECTION		
3	PLAN AND PROFILE		
4-13	19' x 21' O.D. CONC. T-BEAM OVERHEAD	D-467	14+23.76
14	2' x 2' CONC. JUNCTION BOX LT.	B-194	15+20
15-16	STD. HIGHWAY SIGNS	B-95-142	
17-A	F.A.P. AND R/W MARKERS	M-45	VARIOUS
17-B	STD. R/W FENCE	M-46	VARIOUS
18	2' x 2' CONC. JUNCTION BOX RT.	V-205	23+20
1-7	X-SECTIONS		

INDEX TO SHEETS F.A.G.H. No 214-C (3)

SHEET	DESCRIPTION	DRAWING	STATION
1	TITLE SHEET		
2	SITUATION PLAN		
3	SIGNAL AND ACC. EQUIPMENT	D.S.R.G.M.	32+11.6
4	WIRING DIAGRAM		

INDEX TO SHEETS SN-F.A.G.H. No 214-F (1)

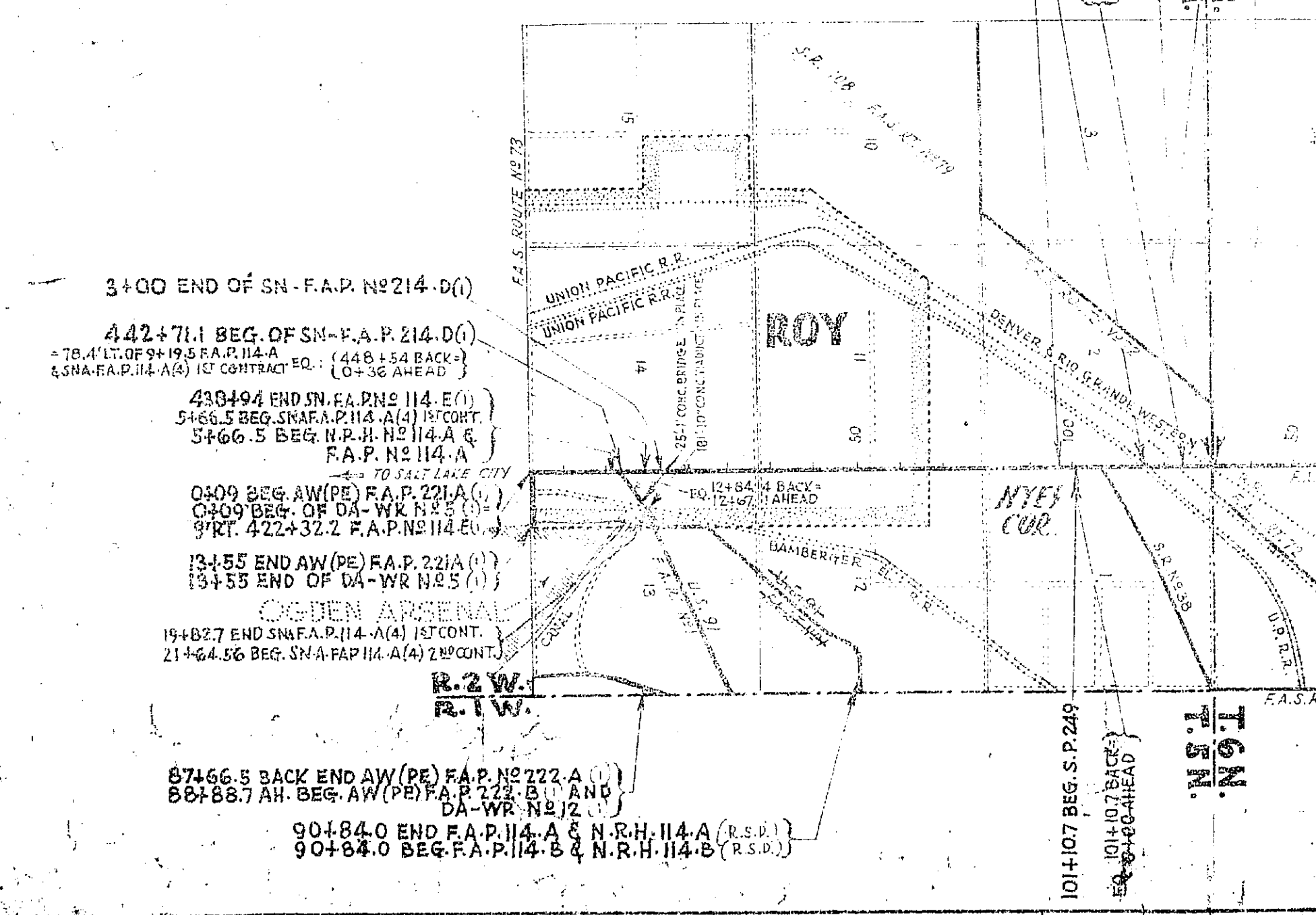
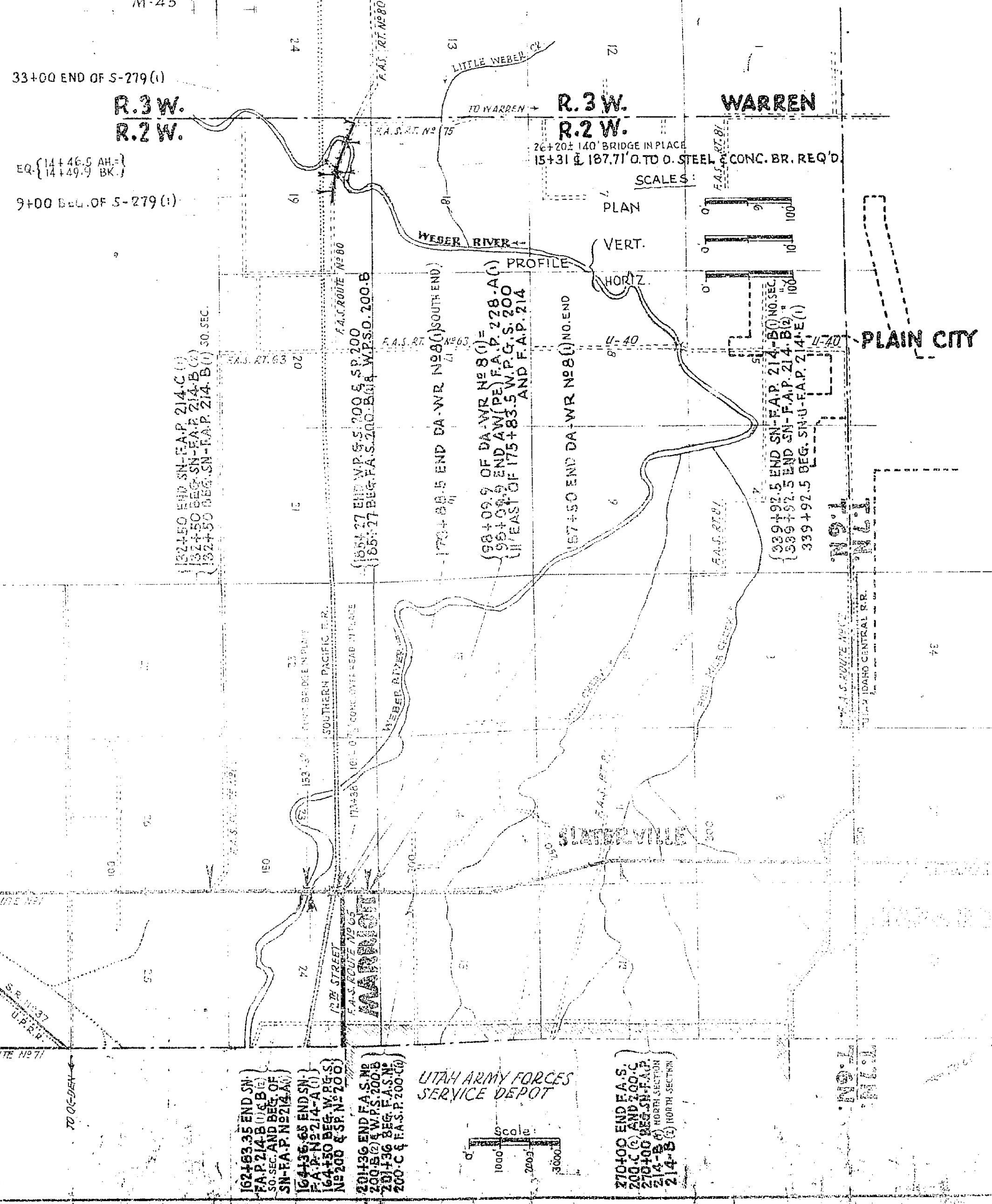
SHEET	DESCRIPTION	DRAWING	STATION
1	TITLE SHEET		
2	TYPICAL SECTION		
3-5	PLAN AND PROFILE		
6-7	STD. HIGHWAY SIGNS	B-95-142	
8-19	273.62' CONC. OVERHEAD	D-443	544+39.62
20-A	F.A.P. MARKERS	M-45	
20-B	R/W FENCE AND GATES	M-46	
20-C	SUPER. & WIDEN CURVES	M-37	
1-15	X-SECTIONS		

INDEX TO SHEETS SN-F.A.P. 214-C (1)

SHEET No.	DESCRIPTION	DRAWING No.	STATION
1	TITLE SHEET		
2	TYPICAL SECTION		
3-B	PLAN AND PROFILE		
9-10	3-WAY DIVERSION BOX	V-206	34+50
11	STD. DIVERSION BOX	V-302	52+38
12	CATCH BASIN	V-330-11-2	62+02
13	18' x 12' CONC. PIPE SYPHON	B-746-1-3	77+64
14	STD. 2-WAY DIVERSION BOX LT. TYPE 'E'	V-205	83+31
15	13' x 4' x 49' CONC. BOX	V-305	84+31
16-18	7' x 6' CONC. DIV. BOX (WITH TRANSITION)	V-305	84+31
19	32' CONC. TRANSITION FROM CONC. BOX TO CANAL	V-303	84+31
20	6' x 3' x 77' CONC. BOX	V-307	84+31
21	WILSON CANAL REVISIONS	V-308	84+31
22	HEADGATES AND OUTLETS	V-309	84+31
23	18' x 102' CONC. PIPE SYPHON	B-746-1-2	84+31
24-A	R/W MARKERS	M-45	84+31
24-B	SUPER. AND WIDEN CURVES	M-160	84+31
24-C	STD. R/W FENCE (NON-PART.)	M-46	84+31
25-26	STD. HIGHWAY SIGNS	B-95-142	84+31
27	R.R. ADVANCE WARNING SIGN	B-40	84+31
28	R.R. X-ING SIGN	B-40	84+31
29-A	2' x 3' x 24' CONC. BOX	A-41-116	84+31
29-B	6' x 3' x 12' CONC. BOX	A-41-115	84+31
1-26	X-SECTIONS		

INDEX TO SHEETS SN-F.A.P. 214-D (1)

SHEET	DESCRIPTION	DRAWING	STATION
1	TITLE SHEET		
2-2A	TYPICAL SECTION		
3	PLAN AND PROFILE		
4	CHANNELIZATION		
5-6	STD. HIGHWAY SIGNS	B-95-142	
7	HEADGATES AND OUTLETS	V-313-L1	VARIOUS
8	EXT. TO EXISTING BOX	E-756	12+74
9	REINFORCING AND JOINT DETAIL	A-40	426+51
10	STD. CURB	B-94	
11-A	F.A.P. MARKER	M-45	
1-6	X-SECTIONS		



APPROVED OCTOBER, 1947
STATE ROAD COMMISSION OF UTAH
Ray W. McLean
CHIEF ENGINEER

241+00 BEG. SN-F.A.P. 32(2)
F.A.G.S. 83-A(1) X-ING SIGNAL
(189+02.9 BEG. F.A.P. 32(2) REVISION)
(189+00 BACK)
(1421.6 BEG. F.A.S. 10-A & 10-B) (10' RT. OF 184+32.0 F.A.P. 32)
(228+50 END SN-U-F.A.P. 32(3))
(228+50 F.A.P. 32 (ORIGINAL))
(218+50 F.A.P. 32 (ORIGINAL))
(219+50 BEG. SN-U-F.A.P. 32(3))

RECOMMENDED FOR APPROVAL _____ DATE _____

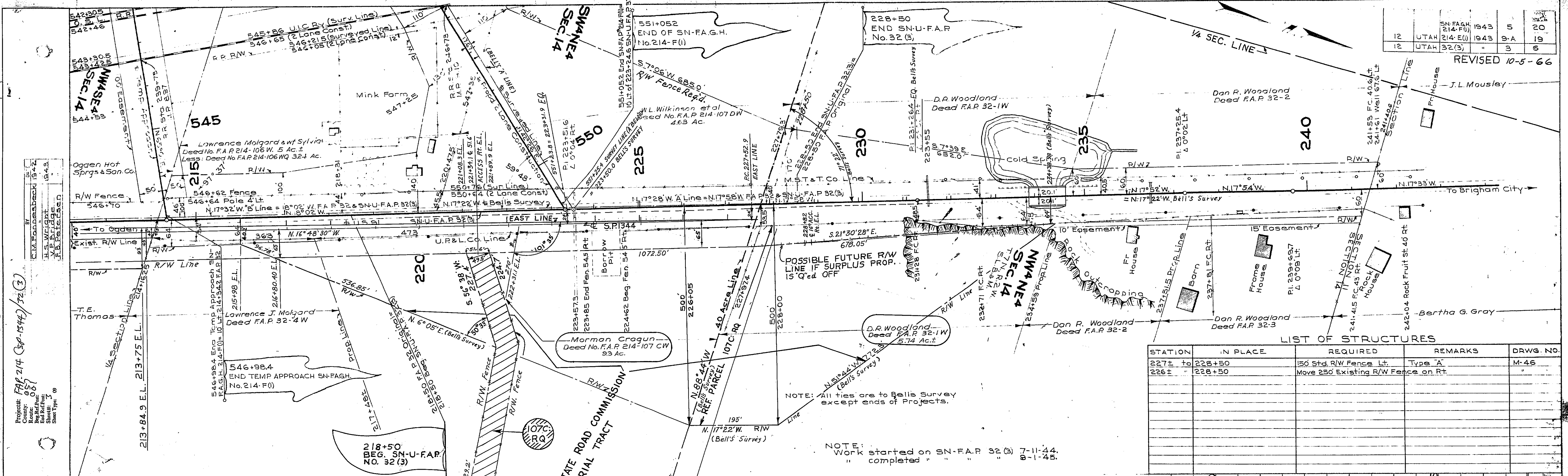
DISTRICT ENGINEER
PUBLIC ROADS ADMINISTRATION
FEDERAL WORKS AGENCY

APPROVED _____ DATE _____

DIVISION ENGINEER
PUBLIC ROADS ADMINISTRATION
FEDERAL WORKS AGENCY

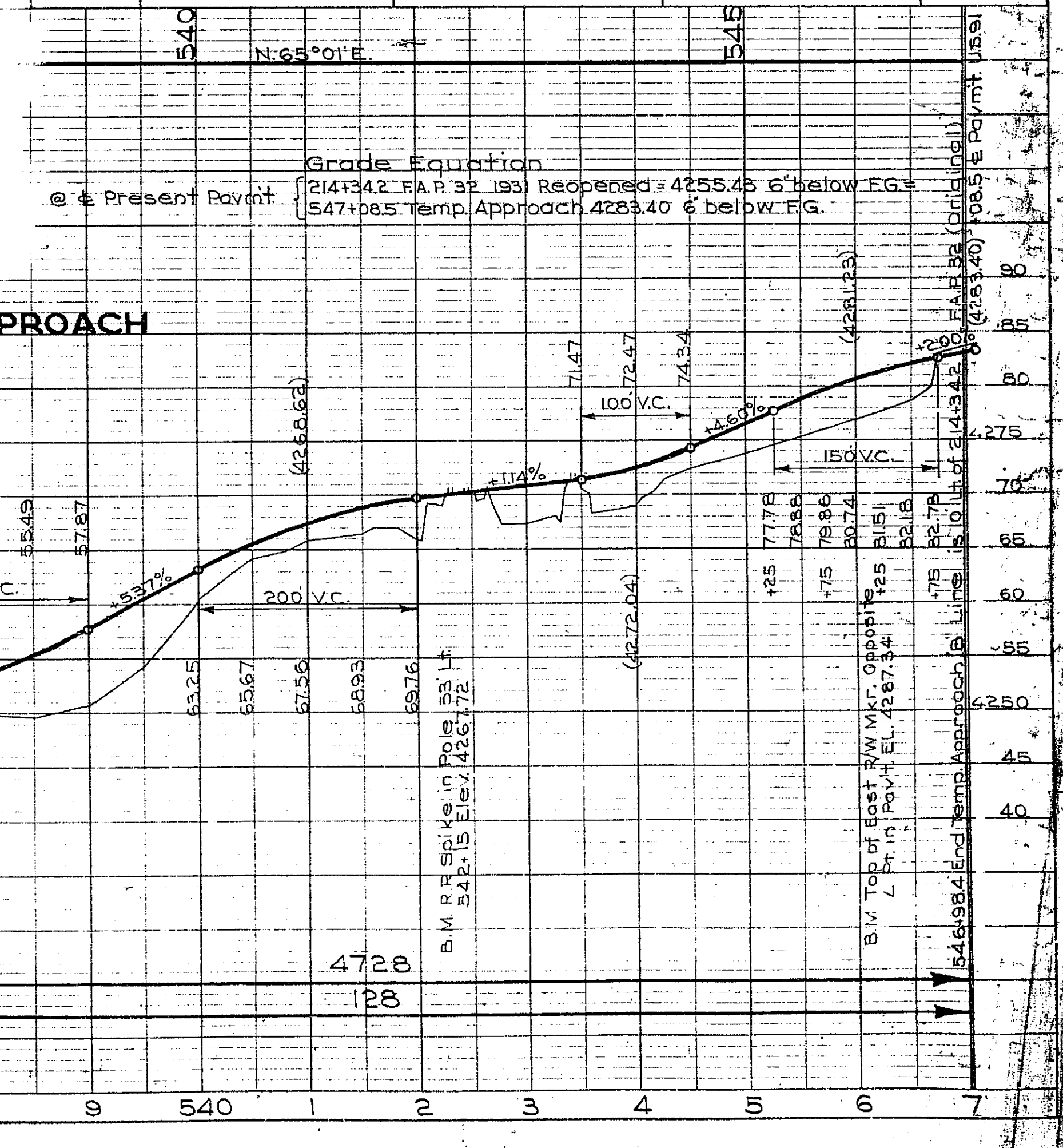
Project: F.A.P. 214 (SF-1544) 32(3)
Date: 8/4/66
Scale: 1" = 400'
Sheet: 01

12	UTAH	SN-F.A.G.H. 214-F(1)	1943	5	20
12	UTAH	32(3)	1943	9-A	19
REVISED 10-5-66					



STATION	IN PLACE	REQUIRED	REMARKS	DRWG. NO.
227± to 228+50		150 Std. R/W Fence Lt.	Type 'A'	M-46
226±		Move 250 Existing R/W Fence on Rt.		

PARCEL NO.	GRANTEE	ACRES
214-107C:RQ	WELDON B. CRAGUN, ET AL	1.21 ±



REVISION ALONG U.S. 91

Embankment	0
Excavation	7300
Remarks	NOTE: Remove existing pavement.

Embankment	1161
Excavation	1043
Remarks	

Project: FAP 214 (30-1544) 12(3)
 Date: 10/5/66
 By: C.M. Farnsworth
 Checked: H.S. Wiegand
 Title: R/W Bridge
 Sheet: 7 of 9

Profile
 Elevation: 4275 to 4300
 Stationing: 220 to 540
 Note: Remove existing pavement.